

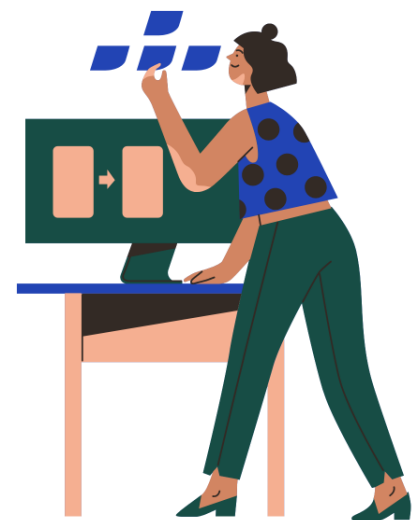




## Connecting to the Internet

### Turning wifi on and off, connecting to different networks and using hotspot, using different browsers

Being online means being connected to the internet. If you are working on your computer without being connected to the internet, it is called being offline.

You can access the internet by wifi from your broadband router at home, with your smartphone, by using a dongle or mobile hotspot, or by using free internet access in public spaces such as libraries. Your broadband router might also be known as an internet box or hub, and will have been sent or given to you when you set up your internet.



To connect, click on the network and internet icon in the bottom right corner of the task bar. It will look either like a small dot with waves coming from it with a small cross  (when you are not connected to the internet), or a small dot with waves coming from it  (when you are connected to the internet).

Click on this icon to see a list of wifi network connections and look for the one that is yours (you will see others in the list that are nearby). A wifi network is a name that identifies the correct network when you try to connect. The one for your home internet will be printed on your home's broadband router.

Click on your Wifi connection, enter your password into the dialogue box, and click "Connect". If you click "Show password" then you can see exactly what you are typing to make sure the password is correct. You are now connected to the internet!


The "waves" or bars on the icon show the signal strength of your wifi connection. The more bars you have, the stronger the signal.



## Hot spotting

If you have a smartphone that connects to the internet, you can use this to connect your computer as well. This is called tethering or hotspotting – it’s like a mini wifi hub you can carry around with you!

In settings in your Apple smartphone, you should have a “mobile hotspot”. In settings in your Android smartphone, you should have a “Network & Internet” section where you will find “Hotspot & tethering”. Click this to turn it on. There may also be shortcuts to the hotspot on your smartphone.

Go back to your wifi network connections icon  and click to find your mobile hotspot. You may need to look under “More networks” to find it. Your computer may ask you for a password, which you will find on your smartphone, enter your password into the dialogue box, and click “Connect”.

When you have finished using your mobile hotspot, be sure to turn this off again on your smartphone as it can use up a lot of your phone’s internet data.

## Internet browsers



Once you are connected to the internet or “online”, you can use a “browser” to access the internet. There are a number of internet browsers you might find on your computer, such as Google Chrome, FireFox, Safari, and Microsoft Edge.

When you open an internet browser you will see a search bar towards the top of the screen. This is where you can search for what you want on the internet. This could be a website that you already know, the name of something you want to look up or a question you might have. Whatever you want.


For example, if you want to find the “Community TechAid” website, you can type in either our full website or just “Community Techaid” and then press the Enter button on your keyboard. The search bar will sometimes make suggestions based on websites you have already visited or things that you might like. If you are using Google search you might be asked to agree to Google’s search terms at the bottom of the pop up box.



If you want to search for multiple things on the internet then you can use tabs. This will keep websites open whilst visiting other websites.



At the very top of your internet page, you will see a plus button. If you click on this a new tab will open up where you can search for another website. If you want to close the tab, click the X button.

In the top left corner, next to the search bar, you will see an arrow pointing to the left, an arrow pointing to the right and a circular arrow . The arrow pointing left will take you back to the last web page that you visited in this session. The arrow pointing right will take you forward to a page that you have visited. The circular arrow will refresh the page to show you the latest version of the webpage that you are on.